

Maple Grove School



# Maple Grove Public School

3991 Regional Road #81 Beamsville, On. L0R1B1

905-562-5151

[www.dsbnschools.org/Schools/MapleGrove](http://www.dsbnschools.org/Schools/MapleGrove)



We Can Make a Difference

## FEBRUARY 2012 NEWSLETTER

### *A Note from Mr. Willms' Desk,...*

One of the things we love about our community is that it is small and that everybody knows everybody- and looks out for them. However, regardless of the size of the school there are procedures in place to ensure everyone's safety and security and they **MUST** be adhered to. When it comes to the safety of the students the staff will always choose the cautious route. We do not want the expectations to become "blurry" as this only increases the potential for hazardous situations to arise.

#### **DISMISSAL ROUTINES (REGULAR OR SPECIAL):**

When you have made arrangements for someone else to pick up your child from school or from a school trip, it is **ESSENTIAL** that these plans be communicated to the office and the teacher by form of note or email ([Tamara.Lockhart@dsbn.org](mailto:Tamara.Lockhart@dsbn.org)). Staff will not release students unless they have been made aware of special arrangements from the office. You will find this expectation common to any school setting.

#### **DAY ENTRY/DISMISSAL TIMING:**

**Our school's start time is 8:45am.** Our teachers are in their classrooms ready to receive students from 8:30am. Please come to school no earlier than 8:30a.m as there is no supervision for them until then. Students who come to school after 8:45am are marked **LATE** in the register.

**The regular dismissal routine is to have children picked up from Maple Grove between 3:15-3:30pm.**

On special days such as skating or visiting Vineland P.S., a parent may make arrangements with the teacher/office to pick up their child **BUT under no circumstances will a child be left behind without direct supervision, even if arrangements were made.** A departing bus will not wait for a special pickup arrangement and the student(s) will return to the school for a regular dismissal.

We thank you for your co-operation on this matter as we strive to create a safe, positive, and productive learning environment for our students at Maple Grove.

## *Dates to Remember.....*

Wednesday, Feb. 8 <sup>th</sup>	Pizza Day
Friday, Feb. 10 <sup>th</sup>	Skating 2-3pm
Tuesday, Feb. 14 <sup>th</sup>	Shared Snack
Wednesday, Feb. 15 <sup>th</sup>	Soup Day
Friday, February 17 <sup>th</sup>	Early Release Day
Monday, February 20 <sup>th</sup>	Family day
Tuesday, February 21 <sup>st</sup>	Pancake Lunch
Friday, February 24 <sup>th</sup>	Skating 2-3pm
Wednesday, Feb. 29 <sup>th</sup>	Sub Day



## *The Pack...*

A huge thanks to John Laycock who has volunteered to be master carpenter for the musical's sets. This is an enormous undertaking (and he probably realized that once he heard what I had in mind) but so far he hasn't run away. If you'd like to offer your assistance, let John or myself know.

It's also time to start some after-school workshops. There are many props, costume pieces, and even puppets to make for the musical, so we'll be having some work sessions at which you can get involved in bringing it all to life. The first is **Thursday, February 9<sup>th</sup> from 3:30 to 6:00**. If you are able to come out and help, or even to learn about some of the projects we'll be doing, that would be smashing! A second workshop will be held on **Thursday, February 16<sup>th</sup>**.

Students are welcome to come lend a hand, however please keep in mind that we have a lot to accomplish and therefore need to be as productive as possible. **Supervision will not be provided by staff**, so please only those students who have a serious interest in helping are invited

Also, watch for news soon for information about ordering *The Pack* t-shirts featuring the logo and the cast!



## *News from the K/1/2 Class....*

Love is in the air! For the next two weeks, we will complete some Valentines Day related activities and, as always, we will work on being caring and considerate friends! On Valentines day, please feel free to wear red, pink, and white clothing if you'd like to get into the spirit! Just in case you are interested in sending Valentines cards this year, I will put a class list on pink paper in the front pocket of your child's agenda. On Valentines day, we traditionally have a shared snack in the late afternoon. This is different from a shared lunch, so please remember that your child will need a normal lunch, drink, and morning snack that day. More information about the Valentines Shared Snack can be found in the general news section of the newsletter.

*Other special days upcoming in the K/1/2 class:*

Thurs. Feb. 9 - Campden gym

Fri. Feb. 10 - Skating (please arrive at the arena by 2:45 p.m. if you are picking up there so that we can get kids ready for the bus)

Mon. Feb. 13 - 100th Day of School - Please send in a collection of 100 items that will fit in your child's backpack.

Tues. Feb. 14 - Valentines Shared Snack

Fri. Feb. 17 - Early Release Day

Mon. Feb. 20 - Family Day

In language arts, we have been focussing on media studies for the past few weeks. We have been analyzing commercials, discussing who the advertisers are targetting as well as the techniques they are using to sell their products (e.g., humour, slogans, songs and jingles, shock, symbols, small print, etc). You may want to discuss these techniques at home while your family watches TV together. It may lead to some very interesting conversations! We have also been examining cereal boxes. The children have created cereal box art projects, written about the reasons why their family chooses the cereals that they do, and are in the process of planning and designing their own cereal box cover. We will complete the planning sheet at school and then I will send home a piece of blank, white coverstock so that your child can draw and design the cereal box at home using his/her plan. Please look for the sheet and instructions to come home sometime next week. The cereal box covers will be due on Friday, Feb. 17th.

In mathematics, we are working on geometry. We have been using math tools like geoboards, mira, and pattern blocks to explore 2D and 3D shapes. It has been wonderful to have parent volunteers helping out with math groups so that the children can work at different levels when exploring these concepts. With our 100th day of school looming, we will also take some time to explore this important number. We will complete lots of fun, math- activities on the 100th day of school in order to celebrate this milestone!

In art, we will examine the work of Wassily Kandinsky. He was a Russian born artist who created geometric abstract paintings. This will connect nicely with our math focus, as Kandinsky often used shapes in his artwork.

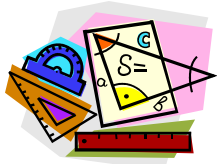
Please continue to check and return your child's agenda every day. It is also important for the kids to be prepared for the weather (however crazy and unpredictable it may be!)

Have a lovely week!

-Sarah



## *News From the Basement....*



February is upon us, and we're having loads of fun in the basement. In Maths, we are continuing to explore measurement and geometry as we explore the area and perimeter of shapes and use sides and angles to define and describe shapes. We'll also be revisiting some multiplication, so practise those times tables at home. It makes life *so much easier* for kids when they can focus on the big picture and not spend all day figuring out what six times seven is.

In Language, we've been working on exploring monologues and now students will begin writing and preparing original monologues to perform for the class. We've seen some great work so far and I'm looking forward to what the class creates. Exploring the voices (not goofy voices, but the styles of speech of different people) of different characters can be quite a challenge.

In Visual Arts, we have been learning about Kandinsky – considered by many to be the first abstract artist – and up next will be an exploration of Ed Emberley's (artist and illustrator of children's books) ideas for drawing using a simple “alphabet” of shapes and lines. It's a great way to start looking at the shapes and forms that make up the things we want to draw.

For the grade fives, our Science unit going quite well, and next week will see us working through a few “investigation stations” so expect us to be in the dark quite a bit, with flashlights and mirrors and more. (Don't tell “the states of matter”, but this Light and Sound unit is my favourite to teach.)

All this and a musical, to boot! Wow!

Jerome



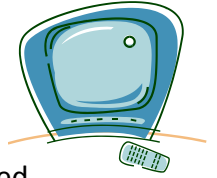
## *Silver Wishes Campaign....*

The West Lincoln Memorial Auxiliary is once again running their Silver Wishes Campaign. This fundraiser raises money to purchase much needed hospital equipment. Last year the Silver Wishes Campaign used their funds to purchase a Vital Signs Monitor for use in diagnosing patients' illnesses. **We are going to run our Silver Wishes Campaign from Friday, February 13<sup>th</sup> until Friday, February 17<sup>th</sup>.** Please bring in all your change; pennies, nickels, dimes, loonies and toonies. A little bit of change goes along way!



## *Grade 4/5 French Update....*

Salut! We have just started a new unit about television. Students are learning about types of television shows and their likes and dislikes. We are also learning how to conjugate ER verbs in the present tense. Students will be able to use this skill to create their own sentences and also broaden their vocabulary. They will be applying this skill to a call-in show activity at the end of the unit. Students will be asked to create a present a brief call to a television show explaining their likes and dislikes. If you would like to help your child improve their writing, they can practise conjugating er verbs at home. The verbs aimer and détester would be good for them to practise.



ex. Remove the er and add the bolded ending.

J'aime

Tu aimes

Il aime

Nous aimons

Vous aimez

Ils aiment

Elles aiment

Other er verbs are as follow:

donner – to give

parler – to talk

demander – to ask

chanter – to sing

danser – to dance

Juli



## *Shared Snack Day....*

Tuesday, February, 14<sup>th</sup> will be our Shared Snack Day. Please remember our school is a Peanut Free School and when you are purchasing store bought items please look for Peanut/Nut Free snacks. This snack is usually given out later in the day so your child will still need a morning snack and a lunch.

# It's all about FAMILY!

Family Day Free Skate! - Monday, February 20<sup>th</sup>, 2012

Sponsored by Family and Children's Services Niagara

Lace up! Come out and have some fun! Celebrate Family Day with some fun family time!  
Free Skate time sponsored by FACS will be offered at the following locations and times:

Fort Erie	Leisureplex	2:00 pm – 3:30 pm
Grimsby	Peach King Arena	1:00 pm – 4:00 pm
St. Catharines	Seymour-Hannah 4 Pad	9:45 am – 11:15 am
Lincoln	Jordan Arena	3:00 pm – 4:30 pm
West Lincoln	West Lincoln/Smithville Arena	11:30 am – 1:00 pm
Wainfleet	Wainfleet Arena	12:30 pm – 2:00 pm
Niagara-on-the-Lake	Meridian Arena	1:30 pm – 3:00 pm
*Niagara Falls	TD Rink at the Brink	12:00 pm – 2:00 pm
Port Colborne	Humberstone Arena	1:00 pm – 3:00 pm

*\*free skate and helmet rentals at Niagara Falls only*



## Foster Families Needed

Open your hearts and your home to local children and youth in need.

For more information on providing safe and temporary care for children in need

**Call 905-937-7731**

[www.facsniagara.on.ca](http://www.facsniagara.on.ca)



## Skating Days in February....



Our skating days in February are Friday, February 10<sup>th</sup> and Friday, February 24<sup>th</sup>. Please remember to bring your skates and helmets on these days. The students will travel by bus to and from the arena. If you are picking up your child at the arena please be there by 2:45pm as the bus cannot wait past 3:00pm. If another person is picking up your child please let the office know about these arrangements so there is no confusion at the arena. Thank you for your co-operation.

**Early Release Day**~ Friday, February 17<sup>th</sup> is an early release day. Students will be dismissed at 11:45am. Please enjoy your afternoon.

**Family Day**~ Monday, February 20<sup>th</sup> is Family Day. All schools will be closed. We hope that all our families will enjoy this day together.



# Woodend

Issue #3 - Winter 2012

The Living Campus

# Update

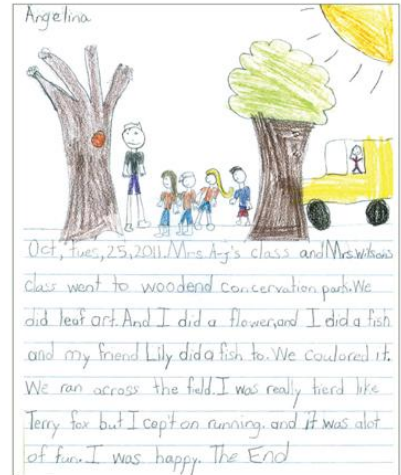
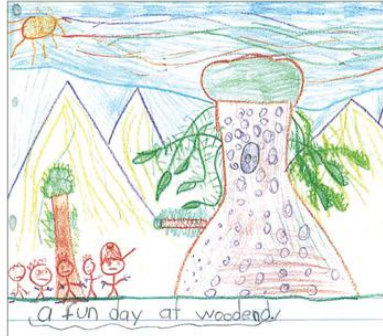
Outdoor Education: healthy children, engaged learners, critical thinkers, tomorrow's leaders

Bringing Learning to Life!



### A Beautiful Day at Woodend!

A very special thank-you to the students from Lincoln Centennial School for sharing their stories and drawings about their day at Woodend! The Living Campus will expand opportunities for students to enjoy outdoor education and to engage in hands-on learning.



Angelina  
Oct, Tues, 25, 2011. Mrs. Ag's class and Mrs. Wilson's class went to woodend conservation park. We did leaf art. And I did a flower and I did a fish and my friend Lily did a fish too. We colored it. We ran across the field. I was really tired like Terry fox but I kept on running. and it was alot of fun. I was happy. The End

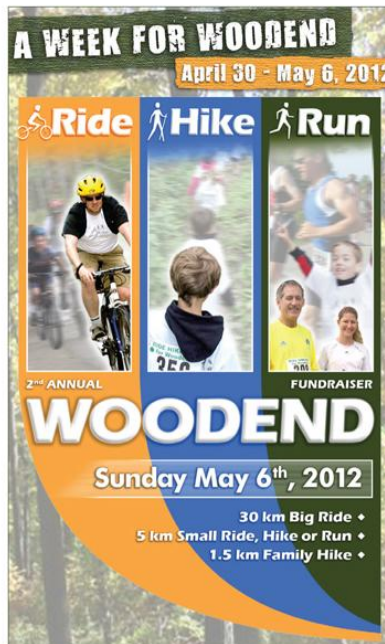
### Support Us with Your Purchases!

Metafore and Acer have partnered with the DSBN to help us reach our fundraising goals! A portion of each Laptop or Tablet you purchase will go directly to The Living Campus, helping create a place for generations of students to come. Click the "Donate" button on [DSBN.org/Woodend](http://DSBN.org/Woodend) for more information and access to Metafore's website.



### Coming Soon: A Week for Woodend and RIDE~HIKE~RUN!

A Week for Woodend (April 30 - May 6, 2012) will be an exciting week, with schools involved in fundraising activities to help raise awareness and funds for The Living Campus. The week will end with the 2nd Annual DSBN Ride-Hike-Run for Woodend on May 6th. Registration opens soon at [DSBN.org/Woodend](http://DSBN.org/Woodend). More details to come. We hope to see everyone there!



### It's All Here: The Woodend Website

To find out about all of the exciting events taking place in support of The Living Campus visit us at: [www.DSBN.org/Woodend](http://www.DSBN.org/Woodend)



### Our Newest Silver Level Partners!

VEX Robotics and Ontario Power Generation have just become The Living Campus' newest Silver level Founder's Club members. A Special Thank-You for helping to *Bring Learning to Life* for our students! If you'd like to make a donation, please visit our website at [www.dsb.org/Woodend](http://www.dsb.org/Woodend) and click on the "Donate" button to download a pledge form.

By supporting Woodend – The Living Campus you are providing children with a place that *Brings Learning to Life* by engaging them in hands-on learning and discovery through play. To find out how you can support the children of Niagara visit us on our website, on Facebook and our blog:

[dsbn.org/woodend](http://dsbn.org/woodend)



DSBN Woodend - The Living Campus



[woodendthelivingcampus.blogspot.com](http://woodendthelivingcampus.blogspot.com)